

**SULZER**

# Mobile Monitoring Solution

Pumps Equipment



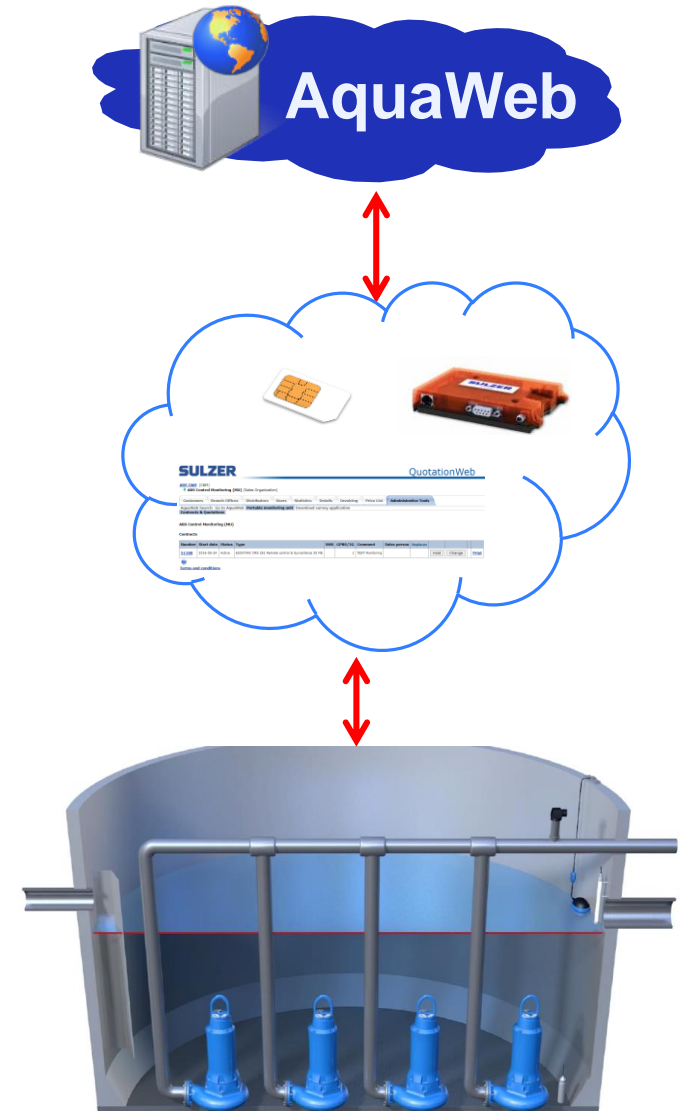
# Content

- Mobile Support & Monitoring
- Benefits of the concept
- All benefits of AquaWeb
- Troubleshooting and monitoring via AquaWeb and AquaProg
- How to do it!
- What can be monitored
- Part numbers needed for the concept
- Check out monitoring sessions data

# Digital solutions

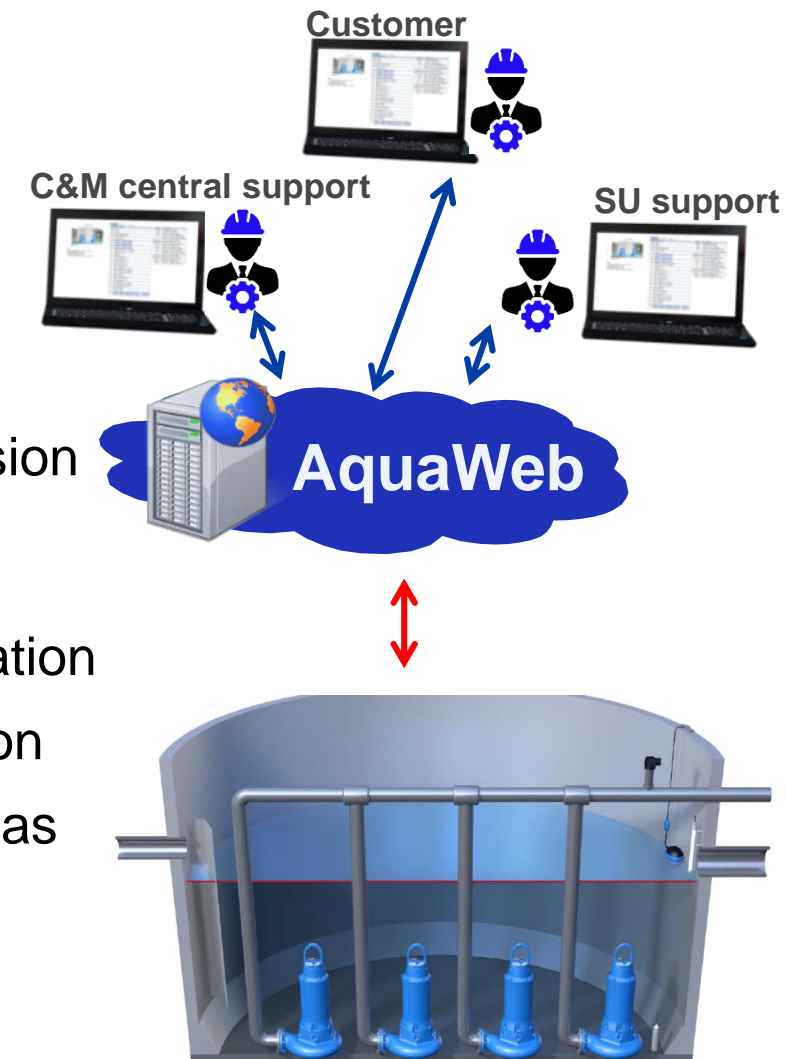
# Mobile Support & Monitoring

- With just a modem, a sim card and an AquaWeb contract you can have a mobile solution for monitoring and troubleshooting stations in the field. The concepts core is that the solution is mobile and reusable.
- **You need:** The concept consist of a modem (CA 524), a sim card (Sulzer) and a contract (AquaWeb).
- **You get:** Remote control and alarms & Charts & Reports & AquaProg (C&M and/or SU support)



# Benefits of the concept

- Online view
- Online configuration
- Remote control & Alarms
- Use on existing equipment
- Easy setup
- Low investment cost
- Monitoring
- Troubleshooting
- Reusable & Mobile solution
- Help in field
- Easier for SU to support
- C&M central support
- **Easy to get started**
- **Lot's of benefits**
- Start a monitoring session
- Have Remote control & Troubleshooting during the session
- Check out data from the session to a virtual station (Asset Management)
- Move equipment to a new station
- Start a new monitoring session
- Checked out data are stored as long as needed in the virtual stations



# All benefits of AquaWeb

- C&M & SU support for controllers with no communication installed on fixed equipment. **NOTE!** Sulzer controller need to have a communication port.
- One mobile CA 524 with Active Sulzer SIM per SU
- One AquaWeb contract per SU
- AquaWeb contract level **CMS 251** Remote Control & Surveillance 30 Mb setup as *Portable monitoring unit*. Set *Collect alarms and events*, *Collect log data* and *Installation complete*
- With a fixed ID from AquaWeb the **CA 524**, equipped with a **Sulzer SIM**, can be used with any Sulzer controller (with communication possibilities) that is even not an AquaWeb unit.
- Just connect CA 524 to an existing controller and set ID in the controller (ID from AquaWeb) and AquaWeb default GPRS parameters (default factory settings in controller) and set modem to CA 524 AquaWeb client.

# Troubleshooting and monitoring via AquaWeb and AquaProg

- AquaWeb for monitoring and AquaProg for troubleshooting.

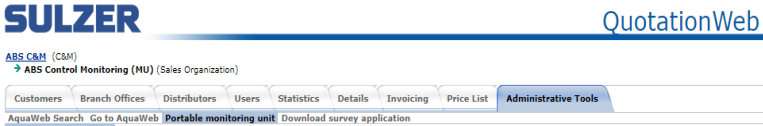


AquaWeb for remote control, alarms, charts and reports.



AquaProg for support and troubleshooting.

- CA 524 modem with a Sulzer SIM and a Portable monitoring unit contract.



- Connect CA 524 equipped with Sulzer SIM to any Sulzer controller with communication. With AquaWeb contract *portable monitoring* a mobile and reusable solution for monitoring and troubleshooting is possible.



# How to do it!

- Set a label on the modem with the AquaWeb Station ID, so it wont be forgotten.



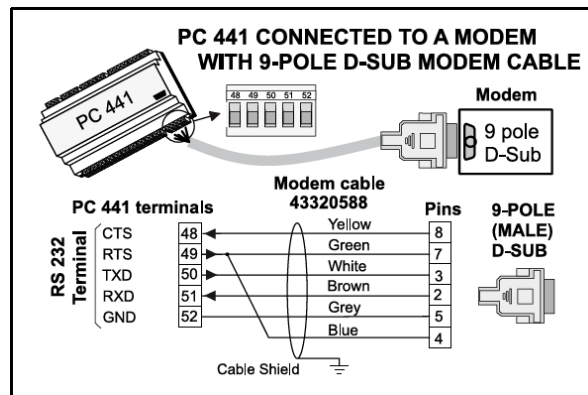
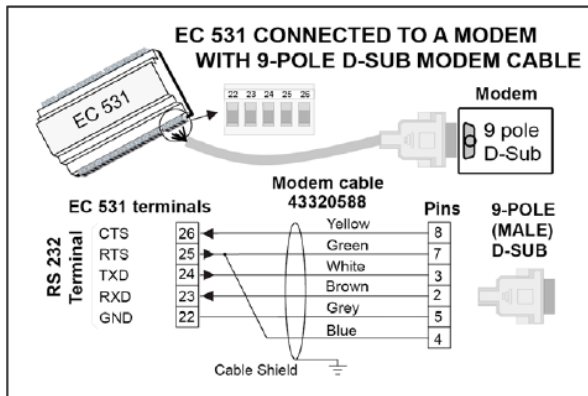
- Go to site





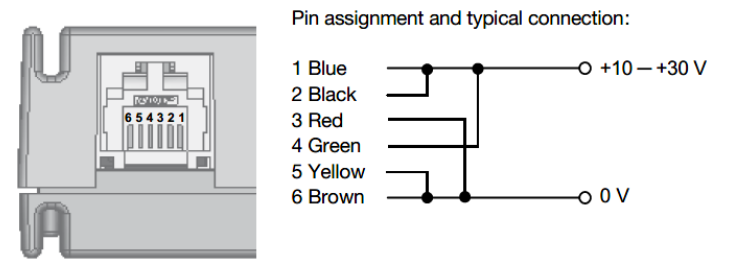
# How to do it!

- Connect the mobile modem to the existing Sulzer controller with the standard (included) RS 232 modem cable



Tip! Connect the RS 232 cable permanently to a terminal that fits in all controllers. The terminal is the same regardless of the numbering on the terminal

- Connect the mobile modem to power supply

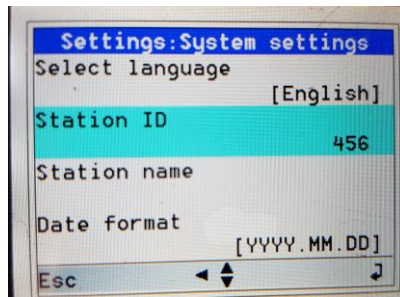


Or connect to a power adaptor i.e. 12VDC/1A with i.e. Wago221 connectors



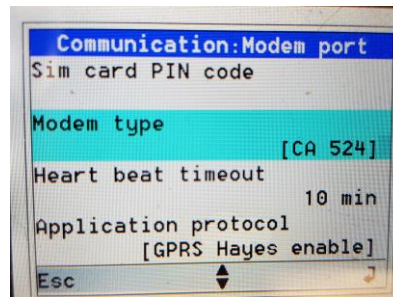
# How to do it!

- Set parameters in the controller
- Station ID

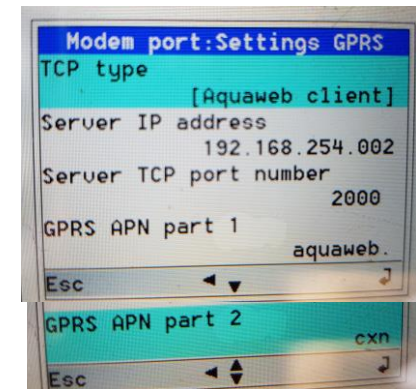


Station ID from AquaWeb.

- Set parameters in the controller
- Modem type CA 524



- Set parameters in the controller
- GPRS parameters

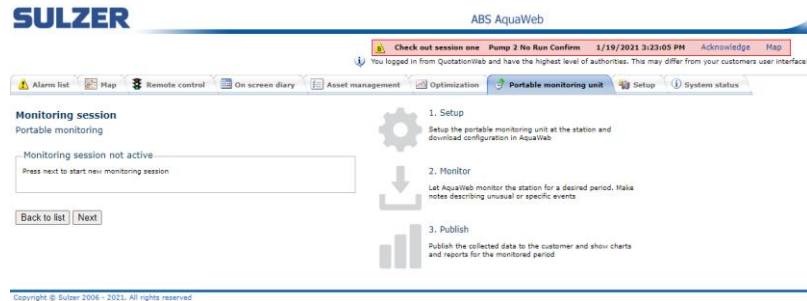


GPRS parameters are factory default settings and do not normally require any changes

# How to do it!

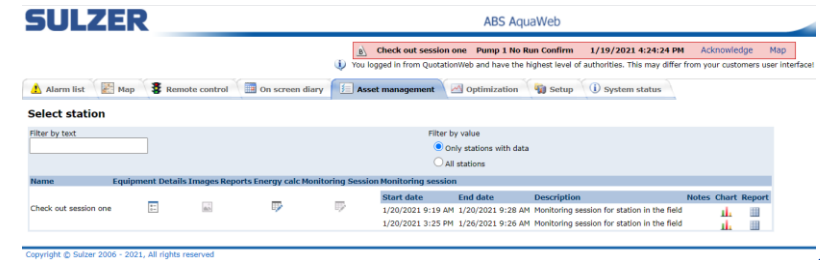
1

- Start the monitoring session from AquaWeb.



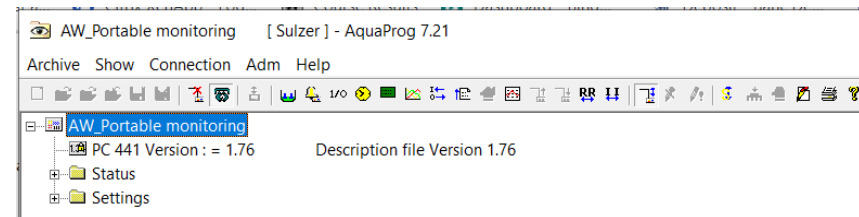
3

- Check out/store data from the monitoring session to a virtual station.



2

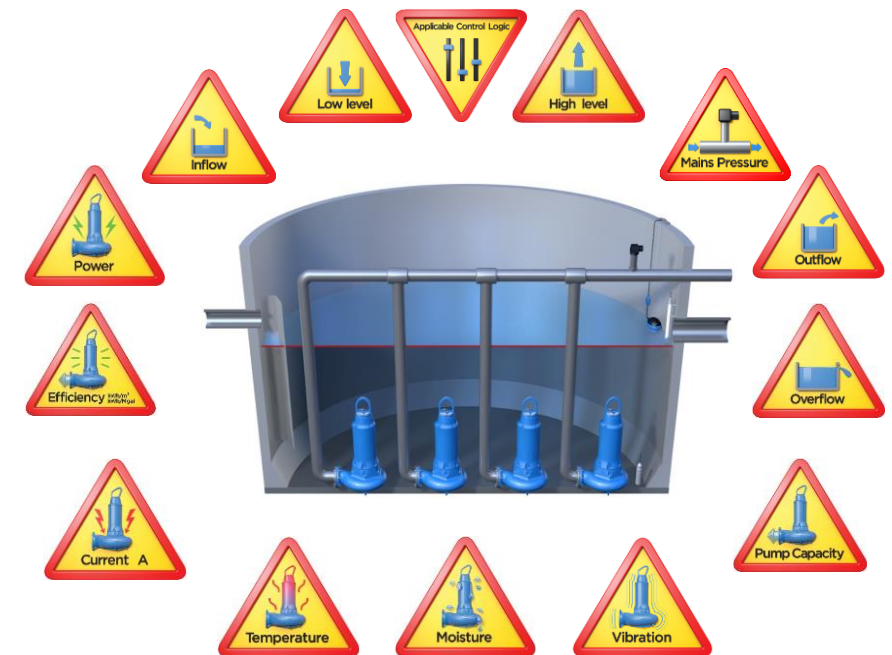
- Troubleshoot with AquaProg if needed during the session.



# What can be monitored!

## Main objectives are:

- Determine pump capacity
- Measure/calculate station in/outflow
- Measure/calculate pump efficiency
- Monitor the head over time
- Detect possible level sensing problems
- Detect possible NRV problems
- Measure/calculate possible overflow events



# Part numbers needed for the concept

- **AquaWeb GPRS/3G/4G SIM card (Telenor Connexion):**
- The SIM card including set-up instructions for connection to AquaWeb in the controller.
- Part number: **28007004**



- **CA 524 4G Modem:**
- The CA 524 is a 4G (UMTS/HSPA+ & LTE) modem suitable for use with all Sulzer controllers equipped with RS 232 com port
- Part number: **28007013** (incl. RS 232 cable)



# Part numbers needed for the concept

- CMS 251 “Remote Control & Alarms 30 Mb” :
- AquaWeb contract level for support via AquaProg and monitoring via AquaWeb.
- Part number: **62007042**

**SULZER** QuotationWeb

ABS C&M (C&M)  
 → ABS Control Monitoring (MU) (Sales Organization)

Customers Branch Offices Distributors Users Statistics Details Invoicing Price List Administrative Tools

AquaWeb Search Go to AquaWeb **Portable monitoring unit** Download survey application  
 Contracts & Quotations

ABS Control Monitoring (MU)

Contracts

Number	Start date	Status	Type	SMS	GPRS/3G	Comment	Sales person	Replaces			
<a href="#">51558</a>	2021-01-20	Active	62007046 CMS 253 Remote control & Surveillance 200 Mb		1		john.wikfors@bredband2.com	51188	Hold	Change	Print

[Terms and conditions](#)

Quotations

Number	Start date	Status	Type	SMS	GPRS/3G	Comment	Sales person	Replaces		

Create new survey task for this customer

**SULZER** ABS AquaWeb

Check out session one Pump 2 No Run Confirm 1/19/2021 3:23:05 PM Acknowledge Map

You logged in from QuotationWeb and have the highest level of authorities. This may differ from your customers user interface!

Alarm list Map Remote control On screen diary Asset management Optimization **Portable monitoring unit** Setup System status

**Portable monitoring unit**

Filter by station name

Select station

Online	Station	Status	Started	Description
●	Portable monitoring			

Copyright © Sulzer 2006 - 2021. All rights reserved

# Check out monitoring sessions data

- When the monitoring session is ended just check out data to a virtual station (Asset management)
- Show and/or analyze data and send to customer
- Start a new session with next station
- This concept can be used the same way on pump equipment without any controller: Request information: [Mobile Monitoring Solutions MD 681](#).
- For more information on how to setup in AquaWeb: Request guide and/or assistance from C&M central to create contract: [Mobile Monitoring Solutions AquaWeb](#)

The image shows two screenshots of the SULZER ABS AquaWeb interface. The top screenshot is the 'Monitoring session' page, where the 'Publish monitoring session' button is circled in red. The bottom screenshot is the 'Select station' page, showing a table with monitoring session data.

**Monitoring session page (top):**

- Navigation: Alarm list, Map, Remote control, On screen diary, Asset management, Optimization, **Portable monitoring unit**, Setup, System status
- Section: **Monitoring session** (Portable monitoring)
- Step 3: Publish
  - Form fields: Sales organization (ABS Control Monitoring (MU)), Customer (Session customer), Station (Check out session one)
  - Buttons: Back to list, Discard monitoring session, **Publish monitoring session** (highlighted)
- Instructions:
  1. Setup: Setup the portable monitoring unit at the station and download configuration in AquaWeb
  2. Monitor: Let AquaWeb monitor the station for a desired period. Make notes describing unusual or specific events
  3. Publish: Publish the collected data to the customer and show charts and reports for the monitored period

**Select station page (bottom):**

- Navigation: Alarm list, Map, Remote control, On screen diary, **Asset management**, Optimization, Setup, System status
- Section: **Select station**
- Filter by text: [ ]
- Filter by value:
  - Only stations with data
  - All stations
- Table:
 

Name	Equipment Details	Images	Reports	Energy calc	Monitoring Session	Monitoring session	Notes	Chart	Report
Check out session one					Start date	End date	Description		
					1/20/2021 9:19 AM	1/20/2021 9:28 AM	Monitoring session for station in the field		

# Contact us

## **Sulzer Control & Monitoring**

Sulzer Pumps Sweden AB  
Rökerigatan 20  
121 62 Johanneshov, Sweden

[Mail](#)



[www.sulzer.com](http://www.sulzer.com)